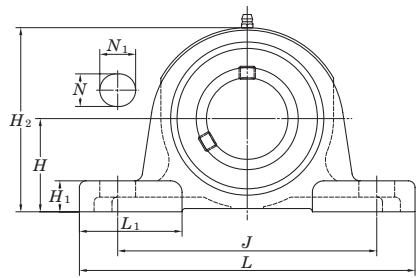
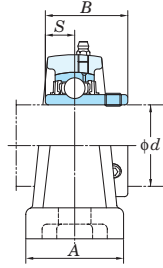
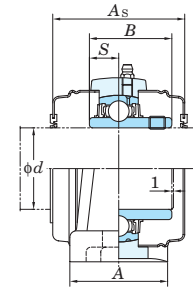


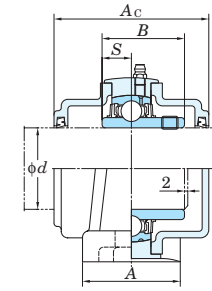
UCP
Cylindrical bore (with set screws)
d (75) ~ 140 mm



With Pressed Steel Cover



With Cast Iron Cover



Variations of tolerance of distance from mounting bottom to center of spherical bore (ΔH_s)

Housing No.	ΔH_s
P203-P210	+0.15
P211-P218	+0.2
PX05-PX10	+0.3
P305-P310	+0.2
P311-P318	+0.3
PX20	+0.3
P319-P328	+0.3

Forms and dimensions of H_{2c} of P204JE3 and P205JE3 (housing with cast iron cover) are shown below.



Shaft Dia. mm inch	Dimensions inch mm	Bolt Size inch mm	Standard			Basic Load Ratings kN	Factor	With Pressed Steel Cover			With Cast Iron Cover																			
			Unit No.	Housing No.	Bearing No.			Unit No.	Dimension mm inch	Mass kg	Unit No.	Dimension mm inch	Mass kg																	
d	H L A J N N1 H1 H2 L1 B S		Open Type	One Side Closed Type	As		Open Type	One Side Closed Type	Ac																					
75 3	3 15/16 100	14 31/32 380	3 15/16 100	11 13/32 290	1 1/16 27	1 9/16 40	1 3/8 35	7 25/32 198	4 7/32 107	3.228 82	1.260 32	7/8 M22	UCP315-47 UCP315 UCP315-48	P315	UC315-47 UC315 UC315-48	14.8 14.8 14.8	113 77.2	13.2	-	-	-	-	-	-	-	-				
	3 1/8 88.9	11 1/2 292	3 1/16 78	9 1/8 232	31/32 25	1 3/8 35	1 1/4 32	6 27/32 174	3 3/8 86	3.252 82.6	1.311 33.3	3/4 M20	UCP216-50 UCP216	P216	UC216-50 UC216	9.0 9.0	72.7 53.0	14.6	UCP216C	UCP216CD	-	-	-	-	-	-	-	-		
	-	4 101.6	15 381	4 102	11 1/8 283	1 1/16 27	2 9/32 58	1 11/32 34	7 11/16 195	4 9/16 116	3.374 85.7	1.343 34.1	7/8 M22	UCPX16	PX16	UCX16	15.3	84.0 61.9	14.5	UCPX16C	UCPX16CD	108 4 1/4	9.0	UCP216FC	UCP216FCD	138 5 7/16	11.4	-	-	-
80 -	4 11/64 106	15 3/4 400	4 11/32 110	11 13/16 300	1 1/16 27	1 9/16 40	1 3/8 35	8 7/32 209	4 23/32 120	3.386 86	1.339 34	7/8 M22	UCP316	P316	UC316	18.5	123 86.7	13.3	-	-	-	-	-	-	-	-	-	-	-	-
	3 1/4 95.2	12 7/32 310	3 9/32 83	9 23/32 247	31/32 25	1 9/16 40	1 1/4 32	7 9/32 185	3 17/32 90	3.374 85.7	1.343 34.1	3/4 M20	UCP217-52 UCP217	P217	UC217-52 UC217	10.8 10.8	84.0 61.9	14.5	UCP217C	UCP217CD	112 4 13/32	10.8	UCP217FC	UCP217FCD	142 5 19/32	13.5	-	-	-	-
	3 7/16 101.6	12 7/32 310	3 9/32 83	9 23/32 247	31/32 25	1 9/16 40	1 1/4 32	7 9/32 185	3 17/32 90	3.374 85.7	1.343 34.1	3/4 M20	UCPX17 UCPX17-55	PX17	UCX17 UCX17-55	16.1 16.1	96.1 71.5	14.5	UCPX17C	UCPX17CD	122 4 13/16	16.1	-	-	-	-	-	-	-	-
85 -	4 13/32 112	16 17/32 420	4 11/32 110	12 19/32 320	1 5/16 33	1 25/32 45	1 9/16 40	8 21/32 220	4 23/32 120	3.780 96	1.575 40	1 M27	UCP317	P317	UC317	20.3	133 96.8	13.3	-	-	-	-	-	-	-	-	-	-	-	
	3 1/2 101.6	12 7/8 327	3 15/32 88	10 5/16 262	1 1/16 27	1 25/32 45	1 11/32 34	7 25/32 198	4 3/32 104	3.780 96	1.563 39.7	7/8 M22	UCP218-56 UCP218	P218	UC218-56 UC218	13.9 13.9	96.1 71.5	14.5	UCP218C	UCP218CD	122 4 13/16	13.9	UCP218FC	UCP218FCD	152 6	17.0	-	-	-	-
	-	4 101.6	15 381	4 3/8 111	11 1/8 283	1 1/16 27	2 3/8 60	1 1/2 38	8 1/32 204	4 9/16 116	4.094 104	1.689 42.9	7/8 M22	UCPX18	PX18	UCX18	19.1	109 81.9	14.4	UCPX18C	UCPX18C	-	-	-	-	-	-	-	-	-
90 -	3 1/2 118	4 41/64 430	16 15/16 410	4 11/32 330	13 33	1 5/16 40	1 25/32 45	1 9/16 40	9 7/32 234	4 23/32 120	3.780 96	1.575 40	1 M27	UCP318-56 UCP318	P318	UC318-56 UC318	22.8 22.8	143 107	13.3	-	-	-	-	-	-	-	-	-	-	
	4 59/64 125	18 1/2 470	4 23/32 120	14 3/16 360	1 13/32 36	1 13/32 50	1 13/16 46	9 3/4 248	4 29/32 125	4.055 103	1.614 41	1 1/8 M30	UCP319	P319	UC319	29.0	153 119	13.3	-	-	-	-	-	-	-	-	-	-	-	
	3 15/16 127	4 3/4 432	13 1/4 337	1 5/16 33	2 9/16 65	1 25/32 45	1 25/32 45	9 21/32 245	4 31/32 126	4.626 117.5	1.937 49.2	1 M27	UCPX20 UCPX20-63 UCPX20-64	PX20	UCX20 UCX20-63 UCX20-64	30.4 30.4 30.4	133 105	14.4	-	-	-	-	-	-	-	-	-	-	-	
100 4	5 33/64 140	19 9/32 490	4 23/32 120	14 31/32 380	1 13/32 36	1 31/32 50	1 13/16 46	10 3/4 273	5 1/2 140	4.252 108	1.654 42	1 1/8 M30	UCP320 UCP320-63 UCP320-64	P320	UC320 UC320-63 UC320-64	35.1 35.1 35.1	173 141	13.2	-	-	-	-	-	-	-	-	-	-	-	
	5 33/64 140	19 9/32 490	4 23/32 120	14 31/32 380	1 13/32 36	1 31/32 50	1 13/16 46	10 3/4 278	5 1/2 140	4.409 112	1.732 44	1 1/8 M30	UCP321	P321	UC321	37.6	184 153	13.2	-	-	-	-	-	-	-	-	-	-	-	
	5 29/32 150	20 15/32 520	5 1/2 140	15 3/4 400	1 9/16 40	2 5/32 55	1 31/32 50	11 21/32 296	5 29/32 150	4.606 117	1.811 46	1 1/4 M33	UCP322	P322	UC322	44.0	205 180	13.2	-	-	-	-	-	-	-	-	-	-	-	-
120 -	6 19/64 160	22 7/16 570	5 1/2 140	17 23/32 450	1 9/16 40	2 5/32 55	1 31/32 50	12 7/16 316	6 5/16 160	4.961 126	2.008 51	1 1/4 M33	UCP324	P324	UC324	55.4	207 185	13.5	-	-	-	-	-	-	-	-	-	-	-	
	7 3/32 180	23 5/8 600	5 1/2 140	18 29/32 480	1 9/16 40	2 5/32 55	1 31/32 50	13 21/32 355	7 11/16 195	5.315 135	2.126 54	1 1/4 M33	UCP326	P326	UC326	72.1	229 214	13.6	-	-	-	-	-	-	-	-	-	-	-	
140 -	7 7/8 200	24 13/32 620	5 1/2 140	19 11/16 500	1 9/16 40	2 5/32 55	2 3/8 60	15 15/32 393	7 9/32 185	5.709 145	2.323 59	1 1/4 M33	UCP328	P328	UC328	92.5	253 246	13.6	-	-	-	-	-	-	-	-	-	-	-	

Remarks 1. In Part No. of unit and units with covers, fitting codes follow bore diameter numbers. (See Table 10.5 in P.51.)
2. Part No. of applicable grease fittings are shown below.
A-1/4-28UNF 201-210, X05-X09, 305-308
A-R1/8 211-218, X10-X20, 309-328

3. As for the triple seal type product (from 201 to 205 are the double seal type products), accessory code L3 (or L2) follows the Part No. of unit or bearing. (Example of Part No. : UCP206JL3, UC206L3)
4. For the dimensions and forms of applicable bearings, see the dimensional tables of ball bearing for unit.
5. Representative examples of the forms of housing are indicated.
6. Housings of nodular graphite cast iron are also available.