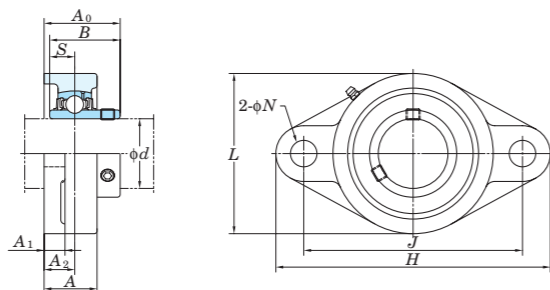
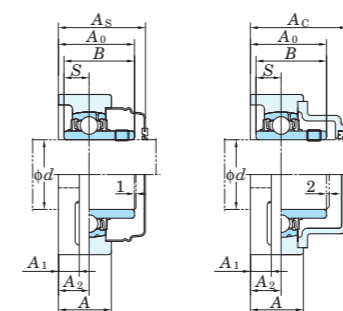


UCFL
Cylindrical bore (with set screws)
d (45) ~ (90) mm



With Pressed Steel Cover With Cast Iron Cover



Variations of tolerance of distance from mounting surface to center of spherical bore (ΔA_{2s}) and tolerance of position of bolt hole (X)
Unit: mm

Housing No.	FL305-FL310	FL305-FL311	ΔA_{2s}	X
FL204-FL210	FLX05-FLX10	FL305-FL311	± 0.5	0.7
FL211-FL218	FL311-FL326	FL312-FL326	± 0.8	1

Variations of tolerance of bolt hole diameter (ΔN_s)
Unit: mm

Housing No.	FL305-FL311	ΔN_s
FL204-FL218	FLX05-FLX10	± 0.2
FL312-FL326	FL312-FL326	± 0.3

Forms and dimensions of L_c of FL204JE3 and FL205JE3 (housing with cast iron cover) are shown below.



Shaft Dia. mm inch	Dimensions inch mm	Bolt Size inch mm	Standard			Mass kg	Basic Load Ratings kN		Factor f_0	With Pressed Steel Cover			With Cast Iron Cover							
			Unit No.	Housing No.	Bearing No.		Unit No. Open Type	Unit No. Closed Type		Dimension mm inch	Mass kg	Unit No. Open Type	Unit No. Closed Type	Dimension mm inch	Mass kg					
45 1 3/4	H 9 1/16 230	7/8 M22	UCFL309-28 UCFL309	FL309	UC309-28 UC309	3.5 3.5	48.9 29.5	13.3	-	-	-	-	-	-	-					
	L 4 29/32 125								A 1 23/32 44	J 6 31/32 177	N 63/64 25	A1 23/32 18	A2 63/64 25	A0 2 3/8 60	B 2.244 57	S 0.866 22	UCFL309C	UCFL309D	76 3	4.1
50 1 7/8 1 15/16 2 1 15/16	H 7 3/4 197	5/8 M16	UCFL210-30 UCFL210-31 UCFL210 UCFL210-32	FL210	UC210-30 UC210-31 UC210 UC210-32	2.2 2.2 2.2 2.2	35.1 23.3	14.4	-	-	-	-	-	-	-	-				
	L 4 17/32 115								A 1 9/16 40	J 6 3/16 157	N 3/4 19	A1 19/32 15	A2 55/64 22	A0 2 5/32 54.6	B 2.031 51.6	S 0.748 19	UCFL210C	UCFL210D	59 2 5/16	2.2
	L 5 1/4 133								A 1 23/32 44	J 7 1/4 184	N 3/4 19	A1 25/32 20	A2 1 1/32 26	A0 2 11/32 59.4	B 2.189 55.6	S 0.874 22.2	UCFLX10C	UCFLX10D	64 2 17/32	3.8
	L 5 1/2 140								A 1 7/8 48	J 7 23/64 187	N 63/64 25	A1 3/4 19	A2 1 7/64 28	A0 2 5/8 67	B 2.402 61	S 0.866 22	UCFL310C	UCFL310D	83 3 9/32	5.2
55 2 2 1/8 2 3/16	H 8 13/16 224	5/8 M16	UCFL211-32 UCFL211-34 UCFL211 UCFL211-35	FL211	UC211-32 UC211-34 UC211 UC211-35	3.3 3.3 3.3 3.3	43.4 29.4	14.4	-	-	-	-	-	-	-	-				
	L 5 1/8 130								A 1 11/16 43	J 7 1/4 184	N 3/4 19	A1 23/32 18	A2 63/64 25	A0 2 5/16 58.4	B 2.189 55.6	S 0.874 22.2	UCFL211C	UCFL211D	63 2 15/32	3.3
	L 5 29/32 150								A 2 1/16 52	J 7 51/64 198	N 63/64 25	A1 25/32 20	A2 1 3/16 30	A0 2 25/32 71	B 2.598 66	S 0.984 25	UCFL311C	UCFL311D	87 3 7/16	6.2
	L 5 1/2 140								A 1 7/8 48	J 7 23/64 187	N 63/64 25	A1 3/4 19	A2 1 7/64 28	A0 2 5/8 67	B 2.402 61	S 0.866 22	UCFL311C	UCFL311D	87 3 7/16	6.2
60 2 1/4 2 3/8 2 7/16	H 9 27/32 250	3/4 M20	UCFL212-36 UCFL212 UCFL212-38 UCFL212-39	FL212	UC212-36 UC212 UC212-38 UC212-39	4.2 4.2 4.2 4.2	52.4 36.2	14.4	-	-	-	-	-	-	-	-				
	L 5 1/2 140								A 1 7/8 48	J 7 61/64 202	N 29/32 23	A1 23/32 18	A2 1 9/64 29	A0 2 23/32 68.7	B 2.563 65.1	S 1.000 25.4	UCFL212C	UCFL212D	73 2 7/8	4.2
	L 6 5/16 160								A 2 7/32 56	J 8 11/32 212	N 1 7/32 31	A1 7/8 22	A2 1 19/64 33	A0 3 1/16 78	B 2.795 71	S 1.024 26	UCFL312C	UCFL312D	95 3 3/4	7.7
	L 6 3/4 175								A 2 31/32 68	J 8 17/64 210	N 29/32 23	A1 23/32 18	A2 1 3/16 30	A0 2 3/4 69.7	B 2.563 65.1	S 1.000 25.4	UCFL213C	UCFL213D	74 2 29/32	5.1
65 2 1/2 2 1/2	H 10 5/32 258	1 M27	UCFL213-40 UCFL213 UCFL213-40 UCFL213	FL213	UC213-40 UC213 UC213-40 UC213	5.1 5.1 8.5 8.5	57.2 40.1	14.4	-	-	-	-	-	-	-	-				
	L 6 7/8 175								A 2 9/32 58	J 8 29/64 240	N 1 7/32 31	A1 29/32 25	A2 1 19/64 33	A0 3 1/16 78	B 2.953 75	S 1.181 30	UCFL213C	UCFL213D	74 2 29/32	5.1
	L 6 3/4 185								A 2 1/8 54	J 8 1/2 216	N 29/32 23	A1 29/32 25	A2 1 19/64 33	A0 3 1/16 78	B 2.937 75	S 1.189 30	UCFL313C	UCFL313D	94 3 11/16	9.6
	L 7 1/8 195								A 2 1/8 54	J 8 1/2 216	N 29/32 23	A1 29/32 25	A2 1 19/64 33	A0 3 1/16 78	B 2.937 75	S 1.189 30	UCFL214C	UCFL214D	80 3 5/32	5.7
70 2 3/4 2 3/4	H 10 7/16 265	3/4 M20	UCFL214-44 UCFL214 UCFL214-44 UCFL214	FL214	UC214-44 UC214 UC214-44 UC214	5.7 5.7 9.7 9.7	62.2 44.1	14.5	-	-	-	-	-	-	-	-				
	L 6 3/4 185								A 2 13/32 61	J 9 27/32 250	N 1 3/8 35	A1 1 3/32 28	A2 1 27/64 36	A0 3 3/16 81	B 3.071 78	S 1.299 33	UCFL214C	UCFL214D	80 3 5/32	5.7
	L 7 1/8 195								A 2 13/32 61	J 9 27/32 250	N 1 3/8 35	A1 1 3/32 28	A2 1 27/64 36	A0 3 3/16 81	B 3.071 78	S 1.299 33	UCFL314C	UCFL314D	98 3 27/32	10.8
	L 7 1/2 205								A 2 13/32 61	J 9 27/32 250	N 1 3/8 35	A1 1 3/32 28	A2 1 27/64 36	A0 3 3/16 81	B 3.071 78	S 1.299 33	UCFL215C	UCFL215D	83 3 9/32	6.4
75 2 15/16 3 2 15/16	H 10 13/16 275	3/4 M20	UCFL215-47 UCFL215 UCFL215-48 UCFL215	FL215	UC215-47 UC215 UC215-48 UC215	6.4 6.4 6.4 11.3	67.4 48.3	14.5	-	-	-	-	-	-	-	-				
	L 6 1/2 165								A 2 7/32 56	J 8 55/64 225	N 29/32 23	A1 25/32 20	A2 1 11/32 34	A0 3 3/32 78.5	B 3.063 77.8	S 1.311 33.3	UCFL215C	UCFL215D	83 3 9/32	6.4
	L 7 1/16 195								A 2 19/32 66	J 10 15/64 260	N 1 3/8 35	A1 1 3/16 30	A2 1 17/32 39	A0 3 1/2 89	B 3.228 82	S 1.260 32	UCFL315C	UCFL315D	106 4 9/16	12.6
	L 7 1/8 205								A 2 19/32 66	J 10 15/64 260	N 1 3/8 35	A1 1 3/16 30	A2 1 17/32 39	A0 3 1/2 89	B 3.228 82	S 1.260 32	UCFL216C	UCFL216D	88 3 15/32	7.8
80 3 1/8 - 3 1/4	H 11 13/32 290	7/8 M22	UCFL216-50 UCFL216 UCFL216 UCFL216	FL216	UC216-50 UC216 UC216 UC216	7.8 7.8 14.4 9.8	72.7 53.0	14.6	-	-	-	-	-	-	-	-				
	L 7 3/32 180								A 2 9/32 58	J 9 11/64 233	N 25/32 25	A1 1 11/32 34	A2 3 9/32 83.3	A0 3 3/8 82.6	B 3.252 82.6	S 1.311 33.3	UCFL216C	UCFL216D	88 3 15/32	7.8
	L 8 9/32 210								A 2 11/16 68	J 11 7/32 285	N 1 1/2 38	A1 1 1/4 32	A2 1 1/2 38	A0 3 17/32 90	B 3.386 86	S 1.339 34	UCFL316C	UCFL316D	107 4 7/32	15.8
	L 8 1/2 210								A 2 11/16 68	J 11 7/32 285	N 1 1/2 38	A1 1 1/4 32	A2 1 1/2 38	A0 3 17/32 90	B 3.386 86	S 1.339 34	UCFL217C	UCFL217D	92 3 5/8	9.8
85 3 1/4 - 3 1/4	H 12 1/8 305	7/8 M22	UCFL217-52 UCFL217 UCFL217 UCFL217	FL217	UC217-52 UC217 UC217 UC217	9.8 9.8 16.0 13.3	84.0 61.9	14.5	-	-	-	-	-	-	-	-				
	L 7 15/32 190								A 2 15/32 63	J 9 49/64 248	N 63/64 25	A1 7/8 22	A2 1 27/64 36	A0 3 7/16 87.6	B 3.374 85.7	S 1.343 34.1	UCFL217C	UCFL217D	92 3 5/8	9.8
	L 8 21/32 220								A 2 29/32 74	J 11 13/16 300	N 1 1/2 38	A1 1 1/4 32	A2 1 1/2 38	A0 3 15/16 100	B 3.780 96	S 1.575 40	UCFL317C	UCFL317D	117 4 19/32	17.6
	L 8 1/2 220								A 2 29/32 74	J 11 13/16 300	N 1 1/2 38	A1 1 1/4 32	A2 1 1/2 38	A0 3 15/16 100	B 3.780 96	S 1.575 40	UCFL218C	UCFL218D	101 3 31/32	12.3
90 3 1/2 3 1/2	H 12 19/32 320	7/8 M22	UCFL218-56 UCFL218	FL218	UC218-56 UC218	12.3 12.3	96.1 71.5	14.5	-	-	-	-	-	-	-					
	L 8 1/16 205								A 2 11/16 68	J 10 7/16 265	N 29/32 23	A1 1 31/64 40	A2 3 25/32 96	A0 96.3 96	B 3.780 96	S 1.563 39.7	UCFL218C	UCFL218D	101 3 31/32	12.3

Remarks 1. In Part No. of unit and units with covers, fitting codes follow bore diameter numbers. (See Table 10.5 in P.51.)
 2. Part No. of applicable grease fittings are shown below.
 A-1/4-28UNF 201-210, X05-X09, 305-308
 A-R1/8 211-218, X10, 309-326
 3. As for the triple seal type product (from 201 to 205 are the double seal type products), accessory code L3 (or L2) follows the Part No. of unit or bearing. (Example of Part No. : UCFL206JL3, UC206L3)
 4. For the dimensions and forms of applicable bearings, see the dimensional tables of ball bearing for unit.
 5. Housings of nodular graphite cast iron are also available.