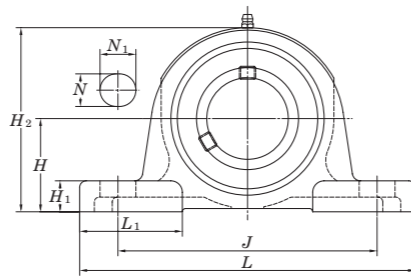
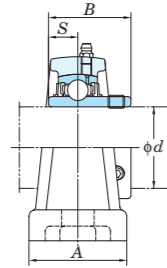
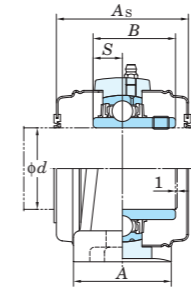


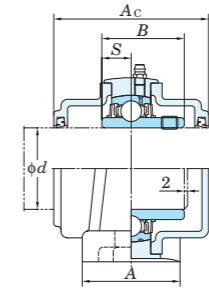
UCP
Cylindrical bore (with set screws)
d 12 ~ (45) mm



With Pressed Steel Cover



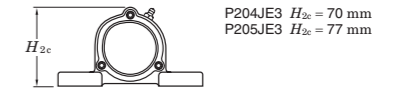
With Cast Iron Cover



Variations of tolerance of distance from mounting bottom to center of spherical bore (ΔH_s)

Housing No.		ΔH_s
P203-P210	PX05-PX10	+0.15
P211-P218	PX11-PX18	+0.2
	P319-P328	+0.3

Forms and dimensions of H_{2c} of P204JE3 and P205JE3 (housing with cast iron cover) are shown below.



Shaft Dia. mm inch	Dimensions inch mm											Bolt Size inch mm	Standard			Mass kg	Basic Load Ratings kN		Factor f_0	With Pressed Steel Cover				With Cast Iron Cover											
	H	L	A	J	N	N ₁	H ₁	H ₂	L ₁	B	S		Unit No.	Housing No.	Bearing No.		C _r	C _{0r}		Unit No.	Dimension mm	Dimension inch	Mass	Unit No.	Dimension mm	Dimension inch	Mass								
12 15 17	1/2 5/8	1 3/16	5	1 1/2	3 3/4	1/2	23/32	15/32	2 3/8	1 1/2	1.220	0.500	3/8	UCP201	P203	UC201	12.8	6.65	13.2	UCP201C	UCP201CD	44	1 23/32	0.63	-	-	-	-	-	-	-				
		30.2	127	38	95	13	18	12	60	38	31	12.7	M10	UC201-8		UC202				44	1 23/32	0.61	-	-	-	-	-	-	-	-					
														M10		UC202-10				UC203	44	1 23/32	0.61	-	-	-	-	-	-	-	-	-	-	-	
														M10		UC203							0.60	-	-	-	-	-	-	-	-	-	-	-	
20	3/4	1 5/16	5	1 1/2	3 3/4	1/2	23/32	1/2	2 11/32	1 1/2	1.220	0.500	3/8	UCP204-12	P204	UC204-12	12.8	6.65	13.2	UCP204C	UCP204CD	44	1 23/32	0.66	-	-	-	-	-	-	-				
		33.3	127	38	95	13	18	13	64	38	31	12.7	M10	UC204								0.66	UCP204FC	UCP204FCD	62	2 7/16	0.96	-	-	-	-	-	-		
25	7/8 15/16 1	1 7/16	5 1/2	1 1/2	4 1/8	1/2	23/32	1/2	2 25/32	1 11/16	1.343	0.563	3/8	UCP205-14	P205	UC205-14	14.0	7.85	13.9	-	-	-	-	-	-	-	-	-	-	-	-	-			
		36.5	140	38	105	13	18	13	71	43	34.1	14.3	M10	UC205-15		UC205				48	1 7/8	0.80	UCP205C	UCP205CD	48	1 7/8	0.80	UCP205FC	UCP205FCD	66	2 19/32	1.2			
														M10		UC205-16							0.80	-	-	-	-	-	-	-	-	-	-	-	-
														M10		UC205-16							0.80	-	-	-	-	-	-	-	-	-	-	-	-
30	1 1/8 1 3/16 1 1/4	1 3/4	6 1/4	2	4 11/16	21/32	31/32	5/8	3 3/8	1 27/32	1.500	0.626	1/2	UCPX05	PX05	UCX05	19.5	11.3	13.9	UCPX05C	UCPX05CD	52	2 1/16	1.5	-	-	-	-	-	-	-				
		44.4	159	51	119	17	25	16	86	47	38.1	15.9	M14	UCX05-16								1.5	-	-	-	-	-	-	-	-	-	-	-		
														M14		UC305				P305	UC305	21.2	10.9	12.6	-	-	-	-	-	-	-	-	-	-	-
														M14		UC305-16					UC305-16							1.7	UCP305C	UCP305CD	76	3	2.3	-	-
35	1 1/8 1 3/16 1 1/4	1 11/16	6 1/2	1 7/8	4 3/4	21/32	13/16	19/32	3 5/16	2 3/32	1.500	0.626	1/2	UCP206-18	P206	UC206-18	19.5	11.3	13.9	-	-	-	-	-	-	-	-	-	-	-	-				
		42.9	165	48	121	17	21	15	84	53	38.1	15.9	M14	UC206		UC206-19				52	2 1/16	1.3	UCP206C	UCP206CD	52	2 1/16	1.3	UCP206FC	UCP206FCD	70	2 3/4	1.8			
														M14		UC206-20							1.3	-	-	-	-	-	-	-	-	-	-	-	
														M14		UCX06				PX06	UCX06	25.7	15.4	13.9	UCPX06C	UCPX06CD	59	2 5/16	2.1	-	-	-	-	-	-
												M14	UCX06-19	UCX06-20				2.1	-		-				-	-	-	-	-	-	-	-			
40	1 1/2 1 9/16	1 31/32	7 3/32	1 31/32	5 1/2	21/32	25/32	21/32	3 3/4	2 3/32	1.693	0.669	1/2	UCP306	P306	UC306	26.7	15.0	13.3	-	-	-	-	-	-	-	-	-	-	-	-				
		50	180	50	140	17	20	17	95	53	43	17	M14	UC306								2.2	UCP306C	UCP306CD	82	3 7/32	2.8	-	-	-	-	-	-		
														M14		UC207-20				P207	UC207-20	25.7	15.4	13.9	-	-	-	-	-	-	-	-	-	-	-
														M14		UC207-21					UC207-22							1.6	-	-	-	-	-	-	-
												M14	UC207	UC207-23				1.6	UCP207C		UCP207CD				59	2 5/16	1.6	UCP207FC	UCP207FCD	78	3 1/16	2.3			
												M14	UCX07-22	PX07	UCX07-22	29.1	17.8	14.0	UCPX07C		UCPX07CD				68	2 11/16	2.7	-	-	-	-	-	-		
												M14	UCX07		UCX07-23							2.7	-	-	-	-	-	-	-	-	-				
45	1 5/8 1 11/16 1 3/4	2 1/8	8	2 1/4	5 11/16	21/32	1 3/16	3/4	4 1/8	2 17/32	1.937	0.748	1/2	UCP307	P307	UC307	33.4	19.3	13.2	-	-	-	-	-	-	-	-	-	-	-					
		54	203	57	144	17	30	19	105	64	49.2	19	M14	UC307								3.0	UCP307C	UCP307CD	88	3 15/32	3.8	-	-	-	-	-	-		
														M14		UC208-24				P208	UC208-24	29.1	17.8	14.0	-	-	-	-	-	-	-	-	-	-	
														M14		UC208-25					UC208							2.0	UCP208C	UCP208CD	68	2 11/16	2.0	UCP208FC	UCP208FCD
45	1 1/2 1 9/16	2 5/16	8 3/4	2 5/8	6 1/8	25/32	1 1/4	13/16	4 1/2	2 25/32	1.937	0.748	5/8	UCPX08-24	PX08	UCX08-24	34.1	21.3	14.0	UCPX08C	UCPX08CD	68	2 11/16	3.5	-	-	-	-	-	-					
		58.7	222	67	156	20	32	21	114	71	49.2	19	M16	UCX08								3.5	-	-	-	-	-	-	-	-	-				
														M16		UC308-24				P308	UC308-24	40.7	24.0	13.2	UCPX08C	UCPX08CD	68	2 11/16	3.8	-	-	-	-	-	-
														M14		UC308					UC308							3.8	UCP308C	UCP308CD	96	3 25/32	4.8	-	-
45	1 5/8 1 11/16 1 3/4	2 1/8	7 15/32	2 1/8	5 3/4	21/32	13/16	21/32	4 3/16	2 3/8	1.937	0.748	1/2	UCP209-26	P209	UC209-26	34.1	21.3	14.0	-	-	-	-	-	-	-	-	-	-	-					
		54	190	54	146	17	21	17	106	60	49.2	19	M14	UC209-27		UC209-28							2.2	-	-	-	-	-	-	-	-				
														M14		UC209				UC209				2.2	UCP209C	UCP209CD	68	2 11/16	2.2	UCP209FC	UCP209FCD	88	3 15/32	3.0	
														M16		UCX09-28				PX09	UCX09-28	35.1	23.3	14.4	-	-	-	-	-	-	-	-	-		
												M16	UCX09	UCX09				3.7	UCPX09C		UCPX09CD				73	2 7/8	3.7	-	-	-	-	-			

Remarks 1. In Part No. of unit and units with covers, fitting codes follow bore diameter numbers. (See Table 10.5 in P.51.)

- Part No. of applicable grease fittings are shown below.
A-1/4-28UNF 201-210, X05-X09, 305-308
A-R1/8 211-218, X10-X20, 309-328

- As for the triple seal type product (from 201 to 205 are the double seal type products), accessory code L3 (or L2) follows the Part No. of unit or bearing. (Example of Part No. : UCP206JL3, UC206L3)
- For the dimensions and forms of applicable bearings, see the dimensional tables of ball bearing for unit.
- Representative examples of the forms of housing are indicated.
- Housings of nodular graphite cast iron are also available.