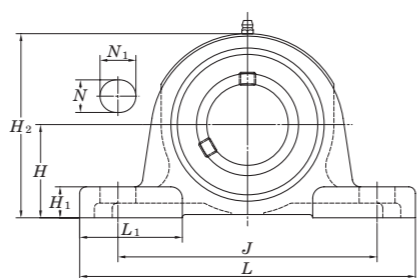
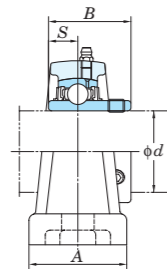
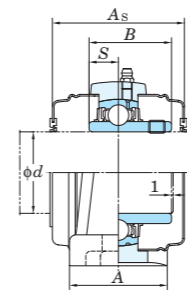


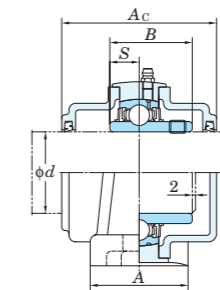
UCP
Cylindrical bore (with set screws)
d (45) ~ (75) mm



With Pressed Steel Cover



With Cast Iron Cover



Variations of tolerance of distance from mounting bottom to center of spherical bore (ΔH_B)

| Housing No. | | ΔH_B | Unit: mm |
|-------------|-----------|--------------|----------|
| P203-P210 | PX05-PX10 | P305-P310 | +0.15 |
| P211-P218 | PX11-PX18 | P311-P318 | +0.2 |
| | PX20 | P319-P328 | +0.3 |

Forms and dimensions of H_{2c} of P204JE3 and P205JE3 (housing with cast iron cover) are shown below.



| Shaft Dia. mm inch | Dimensions inch mm | | | | | | | | | | | | Bolt Size inch mm | Standard | | | Mass kg | Basic Load Ratings kN | | Factor f_0 | With Pressed Steel Cover | | | | With Cast Iron Cover | | | | | |
|--|--------------------------|----------|---------|---------|---------|--------|---------|---------|---------|---------|-------|----------|-------------------------|-------------|-------------|----------|------------|--------------------------|----------|-----------------|--------------------------|------------|----------|----------------------|----------------------|-----------|--------|---------|-----|---|
| | H | L | A | J | N | N_1 | H_1 | H_2 | L_1 | B | S | Unit No. | | Housing No. | Bearing No. | C_r | | C_{0r} | Unit No. | | Dimension mm inch | Mass kg | Unit No. | Dimension mm inch | Mass kg | | | | | |
| 45 1 3/4 | 2 41/64 | 9 21/32 | 2 5/8 | 7 15/32 | 25/32 | 1 3/16 | 13/16 | 5 3/16 | 2 15/16 | 2.244 | 0.866 | 5/8 | UCP309-28 | P309 | UC309-28 | 4.9 | 48.9 | 29.5 | 13.3 | - | - | - | - | - | - | - | - | - | | |
| | 67 | 245 | 67 | 190 | 20 | 30 | 21 | 132 | 75 | 57 | 22 | M16 | UCP309 | | UC309 | 4.9 | | | | - | - | - | - | UCP309C | UCP309CD | 102 | 4 1/32 | 6.2 | | |
| 50 1 7/8 1 15/16 2 1 15/16 | 2 1/4 | 8 1/8 | 2 3/8 | 6 1/4 | 25/32 | 7/8 | 3/4 | 4 7/16 | 2 15/32 | 2.031 | 0.748 | 5/8 | UCP210-30 | P210 | UC210-30 | 2.9 | 35.1 | 23.3 | 14.4 | - | - | - | - | - | - | - | - | - | | |
| | 57.2 | 206 | 60 | 159 | 20 | 22 | 19 | 113 | 63 | 51.6 | 19 | M16 | UCP210-31 | | UC210-31 | 2.9 | | | | - | - | - | - | - | - | - | - | - | | |
| | 2 | 8 1/8 | 2 3/8 | 6 1/4 | 25/32 | 7/8 | 3/4 | 4 7/16 | 2 15/32 | 2.031 | 0.748 | 5/8 | UCP210-32 | | UC210-32 | 2.9 | | | | UCP210C | UCP210CD | 73 | 2 7/8 | 2.9 | UCP210FC | UCP210FCD | 97 | 3 13/16 | 3.9 | |
| | 1 15/16 | 2 1/2 | 9 1/2 | 2 7/8 | 6 23/32 | 25/32 | 1 13/32 | 7/8 | 4 31/32 | 3 | 2.189 | 0.874 | 5/8 | UCPX10-31 | PX10 | UCX10-31 | 4.6 | 43.4 | 29.4 | 14.4 | - | - | - | - | - | - | - | - | - | |
| 2 | 63.5 | 241 | 73 | 171 | 20 | 36 | 22 | 126 | 76 | 55.6 | 22.2 | M16 | UCPX10 | | UCX10 | 4.6 | | | | UCPX10C | UCPX10CD | 75 | 2 15/16 | 4.6 | - | - | - | - | - | |
| - | 2 61/64 | 10 13/16 | 2 15/16 | 8 11/32 | 25/32 | 1 3/8 | 15/16 | 5 13/16 | 3 15/32 | 2.402 | 0.866 | 5/8 | UCP310 | P310 | UC310 | 6.6 | 62.0 | 38.3 | 13.2 | - | - | - | - | - | - | - | - | - | - | |
| 55 2 2 1/8 2 3/16 | 2 1/2 | 8 5/8 | 2 3/8 | 6 23/32 | 25/32 | 7/8 | 3/4 | 4 29/32 | 2 3/4 | 2.189 | 0.874 | 5/8 | UCP211-32 | P211 | UC211-32 | 3.6 | 43.4 | 29.4 | 14.4 | - | - | - | - | - | - | - | - | - | | |
| | 63.5 | 219 | 60 | 171 | 20 | 22 | 19 | 125 | 70 | 55.6 | 22.2 | M16 | UCP211-34 | | UC211-34 | 3.6 | | | | UCP211C | UCP211CD | 75 | 2 15/16 | 3.6 | UCP211FC | UCP211FCD | 99 | 3 29/32 | 4.8 | |
| | 2 3/16 | 8 5/8 | 2 3/8 | 6 23/32 | 25/32 | 7/8 | 3/4 | 4 29/32 | 2 3/4 | 2.189 | 0.874 | 5/8 | UCP211-35 | | UC211-35 | 3.6 | | | | - | - | - | - | - | - | - | - | - | - | |
| | 2 | 2 3/4 | 10 1/4 | 3 1/8 | 7 1/4 | 31/32 | 1 13/32 | 1 3/32 | 5 15/32 | 3 9/32 | 2.563 | 1.000 | 3/4 | UCPX11 | PX11 | UCX11 | 6.5 | 52.4 | 36.2 | 14.4 | UCPX11C | UCPX11CD | 88 | 3 15/32 | 6.5 | - | - | - | - | - |
| 2 3/16 | 69.8 | 260 | 79 | 184 | 25 | 36 | 28 | 139 | 83 | 65.1 | 25.4 | M20 | UCPX11-35 | | UCX11-35 | 6.5 | | | | - | - | - | - | - | - | - | - | - | | |
| 2 1/4 | 3 5/32 | 12 7/32 | 3 5/32 | 9 9/32 | 25/32 | 1 1/2 | 1 1/16 | 6 7/32 | 3 17/32 | 2.598 | 0.984 | 5/8 | UCP311-32 | P311 | UC311-32 | 7.9 | 71.6 | 45.0 | 13.2 | - | - | - | - | - | - | - | - | - | - | |
| 2 3/16 | 80 | 310 | 80 | 236 | 20 | 38 | 27 | 158 | 90 | 66 | 25 | M16 | UCP311 | | UC311 | 7.9 | | | | UCP311C | UCP311CD | 114 | 4 1/2 | 9.7 | - | - | - | - | - | |
| 60 2 1/4 2 3/8 2 7/16 | 2 3/4 | 9 1/2 | 2 3/4 | 7 1/4 | 25/32 | 31/32 | 7/8 | 5 7/16 | 3 | 2.563 | 1.000 | 5/8 | UCP212-36 | P212 | UC212-36 | 4.9 | 52.4 | 36.2 | 14.4 | - | - | - | - | - | - | - | - | - | | |
| | 69.8 | 241 | 70 | 184 | 20 | 25 | 22 | 138 | 76 | 65.1 | 25.4 | M16 | UCP212 | | UC212 | 4.9 | | | | UCP212C | UCP212CD | 88 | 3 15/32 | 4.9 | UCP212FC | UCP212FCD | 114 | 4 1/2 | 6.4 | |
| | 2 7/16 | 3 | 11 1/4 | 3 1/4 | 8 | 31/32 | 1 9/16 | 1 3/32 | 5 31/32 | 3 15/32 | 2.563 | 1.000 | 3/4 | UCPX12 | PX12 | UCX12 | 7.7 | 57.2 | 40.1 | 14.4 | UCPX12C | UCPX12CD | 88 | 3 15/32 | 7.7 | - | - | - | - | - |
| | 2 3/8 | 3 11/32 | 13 | 3 11/32 | 9 27/32 | 31/32 | 1 1/2 | 1 5/32 | 6 9/16 | 4 1/16 | 2.795 | 1.024 | 3/4 | UCP312 | P312 | UC312 | 9.5 | 81.9 | 52.2 | 13.2 | - | - | - | - | - | - | - | - | - | |
| 2 7/16 | 85 | 330 | 85 | 250 | 25 | 38 | 29 | 167 | 103 | 71 | 26 | M20 | UCP312-39 | | UC312-39 | 9.5 | | | | - | - | - | - | - | - | - | - | - | | |
| 65 2 1/2 2 1/2 2 1/2 | 3 | 10 7/16 | 2 3/4 | 8 | 31/32 | 1 3/16 | 31/32 | 5 29/32 | 3 1/16 | 2.563 | 1.000 | 3/4 | UCP213-40 | P213 | UC213-40 | 5.9 | 57.2 | 40.1 | 14.4 | - | - | - | - | - | - | - | - | - | | |
| | 76.2 | 265 | 70 | 203 | 25 | 30 | 25 | 150 | 78 | 65.1 | 25.4 | M20 | UCP213 | | UC213 | 5.9 | | | | UCP213C | UCP213CD | 88 | 3 15/32 | 5.9 | UCP213FC | UCP213FCD | 114 | 4 1/2 | 7.6 | |
| | 2 1/2 | 3 | 11 1/4 | 3 1/4 | 8 | 31/32 | 1 9/16 | 1 3/32 | 6 3/32 | 3 15/32 | 2.937 | 1.189 | 3/4 | UCPX13-40 | PX13 | UCX13-40 | 8.1 | 62.2 | 44.1 | 14.5 | - | - | - | - | - | - | - | - | - | |
| | 2 3/16 | 76.2 | 286 | 83 | 203 | 25 | 40 | 28 | 155 | 88 | 74.6 | 30.2 | M20 | UCPX13 | | UCX13 | 8.1 | | | | UCPX13C | UCPX13CD | 98 | 3 27/32 | 8.1 | - | - | - | - | - |
| 2 1/2 | 3 35/64 | 13 3/8 | 3 17/32 | 10 1/4 | 31/32 | 1 1/2 | 1 1/4 | 6 15/16 | 4 11/32 | 2.953 | 1.181 | 3/4 | UCP313-40 | P313 | UC313-40 | 10.7 | 92.7 | 59.9 | 13.2 | - | - | - | - | - | - | - | - | - | - | |
| 2 3/4 | 90 | 340 | 90 | 260 | 25 | 38 | 32 | 176 | 110 | 75 | 30 | M20 | UCP313 | | UC313 | 10.7 | | | | - | - | - | - | - | - | - | - | - | | |
| 70 2 3/4 2 3/4 2 3/4 | 3 1/8 | 10 15/32 | 2 27/32 | 8 9/32 | 31/32 | 1 3/16 | 1 3/32 | 6 9/32 | 3 1/16 | 2.937 | 1.189 | 3/4 | UCP214-44 | P214 | UC214-44 | 6.8 | 62.2 | 44.1 | 14.5 | - | - | - | - | - | - | - | - | - | | |
| | 79.4 | 266 | 72 | 210 | 25 | 30 | 28 | 156 | 78 | 74.6 | 30.2 | M20 | UCP214 | | UC214 | 6.8 | | | | UCP214C | UCP214CD | 98 | 3 27/32 | 6.8 | UCP214FC | UCP214FCD | 124 | 4 7/8 | 8.7 | |
| | 2 3/4 | 3 1/2 | 13 | 3 1/2 | 9 | 1 1/16 | 1 31/32 | 1 1/4 | 6 29/32 | 3 27/32 | 3.063 | 1.331 | 7/8 | UCPX14-44 | PX14 | UCX14-44 | 10.2 | 67.4 | 48.3 | 14.5 | - | - | - | - | - | - | - | - | - | |
| 2 3/4 | 88.9 | 330 | 89 | 229 | 27 | 50 | 32 | 171 | 98 | 77.8 | 33.3 | M22 | UCPX14 | | UCX14 | 10.2 | | | | UCPX14C | UCPX14CD | 98 | 3 27/32 | 10.2 | - | - | - | - | - | |
| 2 3/4 | 3 47/64 | 14 3/16 | 3 17/32 | 11 1/32 | 1 1/16 | 1 9/16 | 1 1/8 | 7 5/16 | 4 11/32 | 3.071 | 1.299 | 7/8 | UCP314-44 | P314 | UC314-44 | 12.4 | 104 | 68.2 | 13.2 | - | - | - | - | - | - | - | - | - | - | |
| 2 15/16 | 95 | 360 | 90 | 280 | 27 | 40 | 35 | 186 | 110 | 78 | 33 | M22 | UCP314 | | UC314 | 12.4 | | | | - | - | - | - | - | - | - | - | - | | |
| 75 2 15/16 3 2 15/16 | 3 1/4 | 10 13/16 | 2 29/32 | 8 17/32 | 31/32 | 1 3/16 | 1 3/32 | 6 3/8 | 3 5/32 | 3.063 | 1.311 | 3/4 | UCP215-47 | P215 | UC215-47 | 7.4 | 67.4 | 48.3 | 14.5 | - | - | - | - | - | - | - | - | - | | |
| | 82.6 | 275 | 74 | 217 | 25 | 30 | 28 | 162 | 80 | 77.8 | 33.3 | M20 | UCP215 | | UC215 | 7.4 | | | | UCP215C | UCP215CD | 98 | 3 27/32 | 7.4 | UCP215FC | UCP215FCD | 124 | 4 7/8 | 9.3 | |
| | 2 15/16 | 3 1/2 | 13 | 3 1/2 | 9 | 1 1/16 | 1 31/32 | 1 1/4 | 6 7/8 | 3 29/32 | 3.252 | 1.311 | 7/8 | UCPX15-47 | PX15 | UCX15-47 | 10.8 | 72.7 | 53.0 | 14.6 | - | - | - | - | - | - | - | - | - | |
| 3 | 88.9 | 330 | 89 | 229 | 27 | 50 | 32 | 175 | 99 | 82.6 | 33.3 | M22 | UCPX15 | | UCX15 | 10.8 | | | | UCPX15C | UCPX15CD | 108 | 4 1/4 | 10.8 | - | - | - | - | - | |

Remarks 1. In Part No. of unit and units with covers, fitting codes follow bore diameter numbers. (See Table 10.5 in P.51.)

2. Part No. of applicable grease fittings are shown below.

A-1/4-28UNF 201-210, X05-X09, 305-308

A-R1/8 211-218, X10-X20, 309-328

3. As for the triple seal type product (from 201 to 205 are the double seal type products), accessory code L3 (or L2) follows the Part No. of unit or bearing. (Example of Part No. : UCP206JL3, UC206L3)

4. For the dimensions and forms of applicable bearings, see the dimensional tables of ball bearing for unit.

5. Representative examples of the forms of housing are indicated.

6. Housings of nodular graphite cast iron are also available.