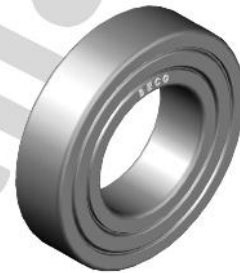
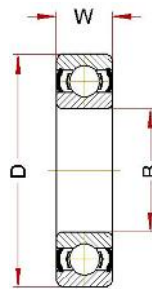
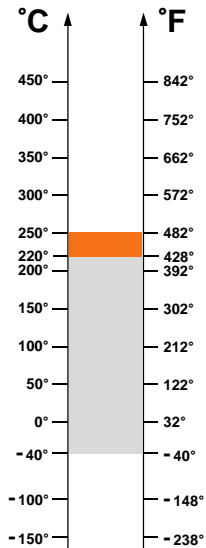


BHTS ZZ C4 220°-250° (6200)



: 40° / 220°C

: 150° / 220°C

: 220° / 250°C

| | (B) | (D) | (W) | ' | ' / | , kN 250°C | , kN 20°C |
|---------------------------|-----|-----|-----|------|------|---------------|--------------|
| 6200 BHTS ZZ C4 220°-250° | 10 | 30 | 9 | 30 | 4060 | 1,96 | 2,60 |
| 6201 BHTS ZZ C4 220°-250° | 12 | 32 | 10 | 37 | 3920 | 2,38 | 3,10 |
| 6202 BHTS ZZ C4 220°-250° | 15 | 35 | 11 | 48 | 3780 | 2,81 | 3,75 |
| 6203 BHTS ZZ C4 220°-250° | 17 | 40 | 12 | 65 | 3640 | 3,57 | 4,75 |
| 6204 BHTS ZZ C4 220°-250° | 20 | 47 | 14 | 110 | 3360 | 5,02 | 6,55 |
| 6205 BHTS ZZ C4 220°-250° | 25 | 52 | 15 | 130 | 3080 | 6,12 | 8,00 |
| 6206 BHTS ZZ C4 220°-250° | 30 | 62 | 16 | 200 | 2800 | 8,50 | 11,2 |
| 6207 BHTS ZZ C4 220°-250° | 35 | 72 | 17 | 290 | 2520 | 11,65 | 15,3 |
| 6208 BHTS ZZ C4 220°-250° | 40 | 80 | 18 | 370 | 2240 | 13,77 | 18,0 |
| 6209 BHTS ZZ C4 220°-250° | 45 | 85 | 19 | 410 | 1960 | 15,56 | 20,4 |
| 6210 BHTS ZZ C4 220°-250° | 50 | 90 | 20 | 460 | 1680 | 18,36 | 24,0 |
| 6211 BHTS ZZ C4 220°-250° | 55 | 100 | 21 | 610 | 1400 | 22,19 | 29,0 |
| 6212 BHTS ZZ C4 220°-250° | 60 | 110 | 22 | 780 | 1260 | 27,34 | 36,0 |
| 6213 BHTS ZZ C4 220°-250° | 65 | 120 | 23 | 990 | 1120 | 31,71 | 41,5 |
| 6214 BHTS ZZ C4 220°-250° | 70 | 125 | 24 | 1040 | 980 | 33,66 | 44,0 |
| 6215 BHTS ZZ C4 220°-250° | 75 | 130 | 25 | 1210 | 840 | 37,49 | 49,0 |