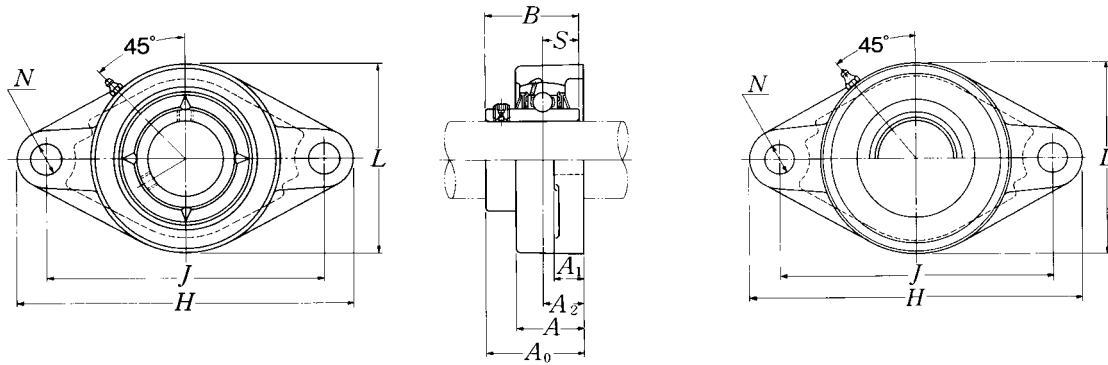


Rhombus flanged units cast housing Set screw type



Pressed steel dust cover type

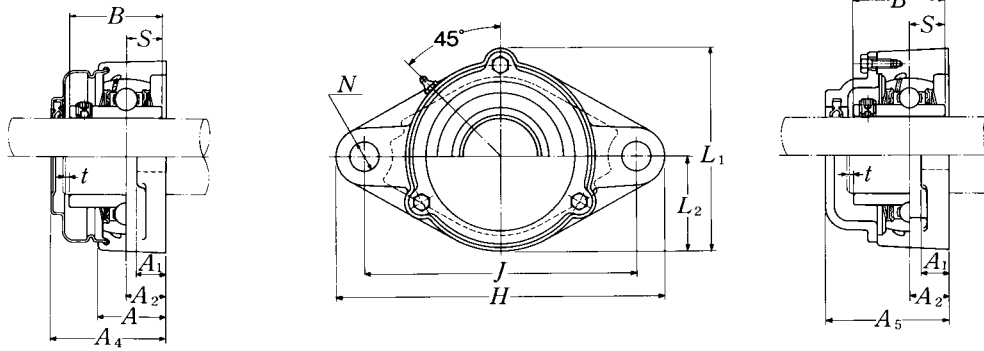
Open end: **S-UCFL...D1**

Closed end: **SM-UCFL...D1**

Shaft dia. mm inch	Unit number ¹⁾	Nominal dimensions										Bolt size mm inch	Bearing number
		H	J	A ₂	A ₁	A	N	L	A ₀	B	S		
50 1 ¹³ / ₁₆ 1 ⁷ / ₈ 1 ¹⁵ / ₁₆ 2	UCFL210D1	197	157	22	16	40	19	115	54.6	51.6	19	M16 5/8	UC210D1
	UCFL210-113D1												UC210-113D1
	UCFL210-114D1												UC210-114D1
	UCFL210-115D1												UC210-115D1
	UCFL210-200D1											UC210-200D1	
55 2 2 ¹ / ₁₆ 2 ¹ / ₈ 2 ³ / ₁₆	UCFL211D1	224	184	25	18	43	19	130	58.4	55.6	22.2	M16 5/8	UC211D1
	UCFL211-200D1												UC211-200D1
	UCFL211-201D1												UC211-201D1
	UCFL211-202D1												UC211-202D1
	UCFL211-203D1											UC211-203D1	
60 2 ¹ / ₄ 2 ⁵ / ₁₆ 2 ³ / ₈ 2 ⁷ / ₁₆	UCFL212D1	250	202	29	18	48	23	140	68.7	65.1	25.4	M20 3/4	UC212D1
	UCFL212-204D1												UC212-204D1
	UCFL212-205D1												UC212-205D1
	UCFL212-206D1												UC212-206D1
	UCFL212-207D1											UC212-207D1	
65 2 ¹ / ₂ 2 ⁹ / ₁₆	UCFL213D1	258	210	30	22	50	23	155	69.7	65.1	25.4	M20 3/4	UC213D1
	UCFL213-208D1												UC213-208D1
	UCFL213-209D1												UC213-209D1
70 2 ⁵ / ₈ 2 ¹¹ / ₁₆ 2 ³ / ₄	UCFL214D1	265	216	31	22	54	23	160	75.4	74.6	30.2	M20 3/4	UC214D1
	UCFL214-210D1												UC214-210D1
	UCFL214-211D1												UC214-211D1
	UCFL214-212D1											UC214-212D1	
75 2 ¹³ / ₁₆ 2 ⁷ / ₈ 2 ¹⁵ / ₁₆ 3	UCFL215D1	275	225	34	22	56	23	165	78.5	77.8	33.3	M20 3/4	UC215D1
	UCFL215-213D1												UC215-213D1
	UCFL215-214D1												UC215-214D1
	UCFL215-215D1												UC215-215D1
	UCFL215-300D1											UC215-300D1	
80 3 ¹ / ₁₆ 3 ¹ / ₈ 3 ³ / ₁₆	UCFL216D1	290	233	34	22	58	25	180	83.3	82.6	33.3	M22 7/8	UC216D1
	UCFL216-301D1												UC216-301D1
	UCFL216-302D1												UC216-302D1
	UCFL216-303D1												UC216-303D1

Remarks: 1) These numbers indicate relubricatable type. If maintenance free type is needed, please order without suffix "D1".

Note: Please refer to page 36 for size of grease fitting.

**Cast dust cover type**Open end: **C-UCFL...D1**Closed end: **CM-UCFL...D1**

Housing number ¹⁾	Unit number ¹⁾ pressed steel dust cover type	Unit number ¹⁾ cast dust cover type	Nominal dimensions					Mass of unit		
			t max.	mm	inch	L ₁	L ₂	UCFL	S(SM)	C(CM)
				A ₄	A ₅					
FL210D1	S(SM)-UCFL210D1	C(CM)-UCFL210D1	3	65.5	72	120	58	2.0	2.1	2.7
FL210D1	S(SM)-UCFL210-113D1	C(CM)-UCFL210-113D1								
FL210D1	S(SM)-UCFL210-114D1	C(CM)-UCFL210-114D1	1/8	2 ¹⁹ / ₃₂	2 ²⁷ / ₃₂	4 ²³ / ₃₂	2 ⁹ / ₃₂	4.4	4.6	6.0
FL210D1	S(SM)-UCFL210-115D1	C(CM)-UCFL210-115D1								
FL210D1	S(SM)-UCFL210-200D1	C(CM)-UCFL210-200D1								
FL211D1	S(SM)-UCFL211D1	C(CM)-UCFL211D1	4	71	75	133	65	2.9	3.0	3.4
FL211D1	S(SM)-UCFL211-200D1	C(CM)-UCFL211-200D1								
FL211D1	S(SM)-UCFL211-201D1	C(CM)-UCFL211-201D1	5/32	2 ²⁵ / ₃₂	2 ¹⁵ / ₁₆	5 ¹ / ₄	2 ⁹ / ₁₆	6.4	6.6	7.5
FL211D1	S(SM)-UCFL211-202D1	C(CM)-UCFL211-202D1								
FL211D1	S(SM)-UCFL211-203D1	C(CM)-UCFL211-203D1								
FL212D1	S(SM)-UCFL212D1	C(CM)-UCFL212D1	4	80	86	144	70	3.8	4.0	4.6
FL212D1	S(SM)-UCFL212-204D1	C(CM)-UCFL212-204D1								
FL212D1	S(SM)-UCFL212-205D1	C(CM)-UCFL212-205D1	5/32	3 ⁵ / ₃₂	3 ³ / ₈	5 ²¹ / ₃₂	2 ³ / ₄	8.4	8.8	10
FL212D1	S(SM)-UCFL212-206D1	C(CM)-UCFL212-206D1								
FL212D1	S(SM)-UCFL212-207D1	C(CM)-UCFL212-207D1								
FL213D1	S(SM)-UCFL213D1	C(CM)-UCFL213D1	4	83.5	90	157	78	4.8	4.9	5.8
FL213D1	S(SM)-UCFL213-208D1	C(CM)-UCFL213-208D1	5/32	3 ⁹ / ₃₂	3 ¹⁷ / ₃₂	6 ³ / ₁₆	3 ¹ / ₁₆	11	11	15
FL213D1	S(SM)-UCFL213-209D1	C(CM)-UCFL213-209D1								
FL214D1	—	C(CM)-UCFL214D1	4	—	98	164	80	5.4	—	7.7
FL214D1	—	C(CM)-UCFL214-210D1								
FL214D1	—	C(CM)-UCFL214-211D1	5/32	—	3 ²⁷ / ₃₂	6 ¹⁵ / ₃₂	3 ⁵ / ₃₂	12	—	17
FL214D1	—	C(CM)-UCFL214-212D1								
FL215D1	—	C(CM)-UCFL215D1	4	—	102	169	82	6.0	—	7.1
FL215D1	—	C(CM)-UCFL215-213D1								
FL215D1	—	C(CM)-UCFL215-214D1	5/32	—	4 ¹ / ₃₂	6 ²¹ / ₃₂	3 ⁷ / ₃₂	13	—	16
FL215D1	—	C(CM)-UCFL215-215D1								
FL215D1	—	C(CM)-UCFL215-300D1								
FL216D1	—	C(CM)-UCFL216D1	4	—	106	183	90	7.4	—	8.6
FL216D1	—	C(CM)-UCFL216-301D1								
FL216D1	—	C(CM)-UCFL216-302D1	5/32	—	4 ³ / ₁₆	7 ⁷ / ₃₂	3 ¹⁷ / ₃₂	16	—	19
FL216D1	—	C(CM)-UCFL216-303D1								