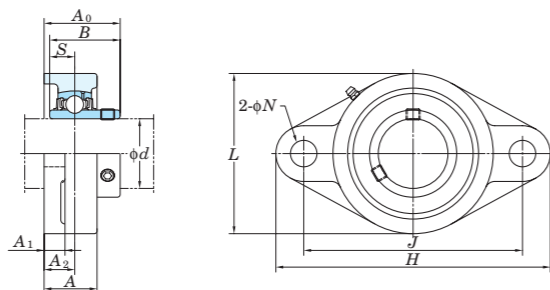
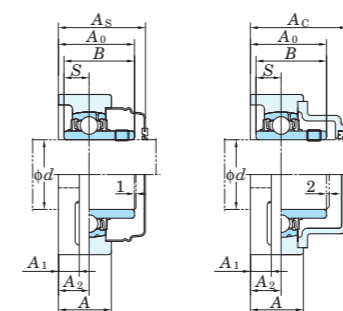


**UCFL**  
Cylindrical bore (with set screws)  
d 12 ~ (45) mm



With Pressed Steel Cover      With Cast Iron Cover



Variations of tolerance of distance from mounting surface to center of spherical bore ( $\Delta A_{2s}$ ) and tolerance of position of bolt hole (X) Unit: mm

Housing No.	FLX05-FLX10	FL305-FL310	$\Delta A_{2s}$	X
FL204-FL210	FLX05-FLX10	FL305-FL310	$\pm 0.5$	0.7
FL211-FL218	FLX05-FLX10	FL311-FL326	$\pm 0.8$	1

Variations of tolerance of bolt hole diameter ( $\Delta N_s$ ) Unit: mm

Housing No.	FLX05-FLX10	FL305-FL311	$\Delta N_s$
FL204-FL218	FLX05-FLX10	FL305-FL311	$\pm 0.2$
FL211-FL218	FLX05-FLX10	FL311-FL326	$\pm 0.3$

Forms and dimensions of  $L_c$  of FL204JE3 and FL205JE3 (housing with cast iron cover) are shown below.



Shaft Dia. mm inch	Dimensions inch mm	Bolt Size inch mm	Standard Unit No.	Standard Housing No.	Standard Bearing No.	Mass kg	Basic Load Ratings kN $C_r$ $C_{0r}$	Factor $f_0$	With Pressed Steel Cover			With Cast Iron Cover				
									Unit No. Open Type	Unit No. Closed Type	Dimension mm inch	Mass kg	Unit No. Open Type	Unit No. Closed Type	Dimension mm inch	Mass kg
12 1/2	H L A J N A1 A2 A0 B S	M10	UCFL201	FL204	UC201	0.50	12.8 6.65	13.2	UCFL201C	UCFL201D	37 1 15/32	0.50	-	-	-	-
			UCFL201-8		UC201-8	-			-	-	-	-	-	-	-	
			UCFL202		UC202	-			-	-	-	-	-	-	-	-
			UCFL202-10		UC202-10	-			-	-	-	-	-	-	-	-
15 5/8	113 60 25.5 90 12 11 15 33.3 31 12.7	M10	UCFL203	FL204	UC203	0.47	12.8 6.65	13.2	UCFL203C	UCFL203D	37 1 15/32	0.47	-	-	-	-
			UCFL204-12		UC204-12	-			-	-	-	-	-	-	-	
			UCFL204		UC204	-			-	-	-	-	-	-	-	-
			UCFL204-12		UC204-12	-			-	-	-	-	-	-	-	-
17 3/4	113 60 25.5 90 12 11 15 33.3 31 12.7	M10	UCFL204	FL204	UC204	0.45	12.8 6.65	13.2	UCFL204C	UCFL204D	37 1 15/32	0.45	UCFL204FC	UCFL204FD	46 1 13/16	0.6
			UCFL205-14		UC205-14	-			-	-	-	-	-	-	-	
			UCFL205-15		UC205-15	-			-	-	-	-	-	-	-	-
			UCFL205		UC205	-			-	-	-	-	-	-	-	-
20 3/4	130 68 27 99 16 13 16 35.8 34.1 14.3	M14	UCFL205-16	FL205	UC205-16	0.64	14.0 7.85	13.9	UCFL205C	UCFL205D	40 1 9/16	0.64	UCFL205FC	UCFL205FD	49 1 15/16	0.83
			UCFL205-15		UC205-15	-			-	-	-	-	-	-	-	
			UCFL205		UC205	-			-	-	-	-	-	-	-	-
			UCFL205-16		UC205-16	-			-	-	-	-	-	-	-	-
25 1	141 83 30 117 12 13 18 40.2 38.1 15.9	M10	UCFLX05	FLX05	UCX05	1.1	19.5 11.3	13.9	UCFLX05C	UCFLX05D	44 1 23/32	1.1	-	-	-	-
			UCFLX05-16		UCX05-16	-			-	-	-	-	-	-	-	
			UCFL305		UC305	-			-	-	-	-	-	-	-	-
			UCFL305-16		UC305-16	-			-	-	-	-	-	-	-	-
25 1	150 80 29 113 19 13 16 39 38 15	M16	UCFL305	FL305	UC305	1.1	21.2 10.9	12.6	-	-	-	-	UCFL305C	UCFL305D	54 2 1/8	1.4
			UCFL305-16		UC305-16	-			-	-	-	-	-	-	-	
			UCFL206-18		UC206-18	-			-	-	-	-	-	-	-	-
			UCFL206		UC206	-			-	-	-	-	-	-	-	-
30 1 1/4	148 80 31 117 16 13 18 40.2 38.1 15.9	M14	UCFL206-19	FL206	UC206-19	0.93	19.5 11.3	13.9	UCFL206C	UCFL206D	44 1 23/32	0.93	UCFL206FC	UCFL206FD	53 2 3/32	1.2
			UCFL206-20		UC206-20	-			-	-	-	-	-	-	-	
			UCFLX06		UCX06	-			-	-	-	-	-	-	-	-
			UCFLX06-19		UCX06-19	-			-	-	-	-	-	-	-	-
30 1 1/4	156 95 34 130 16 14 19 44.4 42.9 17.5	M14	UCFLX06-20	FLX06	UCX06-20	1.5	25.7 15.4	13.9	UCFLX06C	UCFLX06D	49 1 15/16	1.5	-	-	-	-
			UCFL306		UC306	-			-	-	-	-	-	-	-	
			UCFL207-20		UC207-20	-			-	-	-	-	-	-	-	
			UCFL207		UC207	-			-	-	-	-	-	-	-	
35 1 1/8	161 90 34 130 16 14 19 44.4 42.9 17.5	M14	UCFL207-21	FL207	UC207-21	1.2	25.7 15.4	13.9	UCFL207C	UCFL207D	49 1 15/16	1.2	UCFL207FC	UCFL207FD	58 2 9/32	1.6
			UCFL207-22		UC207-22	-			-	-	-	-	-	-	-	
			UCFL207		UC207	-			-	-	-	-	-	-	-	
			UCFL207-23		UC207-23	-			-	-	-	-	-	-	-	
35 1 1/8	171 105 38 144 16 14 21 51.2 49.2 19	M14	UCFLX07-22	FLX07	UCX07-22	1.9	29.1 17.8	14.0	UCFLX07C	UCFLX07D	55 2 5/32	1.9	-	-	-	-
			UCFLX07		UCX07	-			-	-	-	-	-	-	-	
			UCFLX07-23		UCX07-23	-			-	-	-	-	-	-	-	
			UCFL307		UC307	-			-	-	-	-	-	-	-	
40 1 1/2	185 100 36 141 23 16 20 49 48 19	M20	UCFL307	FL307	UC307	1.8	33.4 19.3	13.2	-	-	-	-	UCFL307C	UCFL307D	64 2 17/32	2.2
			UCFL208-24		UC208-24	-			-	-	-	-	-	-	-	
			UCFL208-25		UC208-25	-			-	-	-	-	-	-	-	
			UCFL208		UC208	-			-	-	-	-	-	-	-	
40 1 1/2	175 100 36 144 16 14 21 51.2 49.2 19	M14	UCFLX08-24	FLX08	UCX08-24	2.1	34.1 21.3	14.0	UCFLX08C	UCFLX08D	55 2 5/32	1.6	UCFL208FC	UCFL208FD	64 2 17/32	2.0
			UCFLX08		UCX08	-			-	-	-	-	-	-		
			UCFL308-24		UC308-24	-			-	-	-	-	-	-		
			UCFL308		UC308	-			-	-	-	-	-	-		
45 1 3/4	200 112 40 158 23 17 23 56 52 19	M20	UCFLX09-28	FLX09	UCX09-28	2.5	40.7 24.0	13.2	UCFLX09C	UCFLX09D	56 2 7/32	2.1	UCFL308C	UCFL308D	71 2 25/32	3.0
			UCFL209-26		UC209-26	-			-	-	-	-	-	-		
			UCFL209-27		UC209-27	-			-	-	-	-	-	-		
			UCFL209		UC209	-			-	-	-	-	-	-		
45 1 3/4	188 108 38 148 19 15 22 52.2 49.2 19	M16	UCFLX09-28	FLX09	UCX09-28	1.9	34.1 21.3	14.0	UCFL209C	UCFL209D	56 2 7/32	1.9	UCFL209FC	UCFL209FD	66 2 19/32	2.3
			UCFL209-26		UC209-26	-			-	-	-	-	-	-		
			UCFL209-27		UC209-27	-			-	-	-	-	-	-		
			UCFL209		UC209	-			-	-	-	-	-	-		
45 1 3/4	189 116 40 157 16 14 23 55.6 51.6 19	M14	UCFLX09-28	FLX09	UCX09-28	2.4	35.1 23.3	14.4	UCFLX09C	UCFLX09D	60 2 3/8	2.4	-	-	-	-
			UCFLX09		UCX09	-			-	-	-	-	-	-		

Remarks 1. In Part No. of unit and units with covers, fitting codes follow bore diameter numbers. (See Table 10.5 in P.51.)

2. Part No. of applicable grease fittings are shown below.

A-1/4-28UNF ..... 201-210, X05-X09, 305-308

A-R1/8 ..... 211-218, X10, 309-326

3. As for the triple seal type product (from 201 to 205 are the double seal type products), accessory code L3 (or L2) follows the Part No. of unit or bearing. (Example of Part No.: UCFL206JL3, UC206L3)

4. For the dimensions and forms of applicable bearings, see the dimensional tables of ball bearing for unit.

5. Housings of nodular graphite cast iron are also available.